



STANDARD FEATURES

UNIQUE COMMUNITY

- Unique secluded, private community located in a county atmosphere.
- Open space in various areas throughout the community with some homesites adjacent to it.
- Professionally landscaped community and entrances.
- Sidewalks for added safety.
- Street lighting throughout neighborhood.
- Underground utilities.
- Public water and sewer.
- Tennis and basketball courts, playing field, soccer field and bicycle path.

TRADITIONAL & CONTEMPORARY ARCHITECTURE

- 3 and 4 bedroom floor plans.
- Elegant entry foyers.
- Dramatic nine foot first floor ceilings (most homes).
- Spacious master bedroom suite, private bath and large walk-in closet (most homes).
- Family rooms (most homes).
- 2-car garage (most homes) with raised panel doors.

QUALITY CONSTRUCTION

- Your choice of monolithically poured concrete slab with perimeter insulation or optional poured concrete basement, with monolithically poured walls with exterior waterproof seal, interior and exterior perimeter basement drainage system, sump pump, and engineered floor system with Steel I-Beam girder. Fully conditioned for easy heating and cooling in the future, with oversized windows. 3/4" tongue and groove nailed and glued sub-flooring.
- Interior drywall screwed to framing.
- 150 amp electrical service.
- Washer/Dryer hook up facilities and vent.
- Copper water lines.
- 50 Gallon energy efficient hot water heaters.

- Pre-wired for two telephone and two cable television outlets.
- U.L. approved electronic smoke detection.
- Vinyl coated ventilated closet shelving.
- Asphalt driveway.
- Three separate site orientation visits: during framing, at completion, and pre-settlement.

MAINTENANCE-FREE

EXTERIORS

- Vinyl siding in your choice of color.
- Aluminum rakes, fascias, gutters, down spouts, and wrapped trim.
- Color coordinated asphalt roofing shingles with 25-year warranty.
- Two frost free hose bibs.
- Two weatherproof, ground fault protected exterior electrical outlets (front and rear).
- Brick front elevation options available.

ENERGY SENSITIVE CONSTRUCTION

- Vinyl window frames, with thermal insulated dual glazed glass and screens.
- Anti-air infiltration measures include building wrap, caulking around doors, windows and other exterior wall penetrations.
- Poly-Cel at exterior joints to limit air infiltration and heat loss.
- Energy efficient gas heating, cooking and hot water.
- Energy efficient central air-conditioning.
- Automatic set-back thermostats.
- R13 sidewall and R30 ceiling insulation adjacent to living areas. R19 in garage ceiling areas adjacent to living area.
- Insulated steel exterior doors with weather stripping and oak threshold.
- Insulated trunk lines on heat and air conditioning duct to reduce temperature loss in unconditioned areas.
- Individual air returns in bedrooms (most homes).

GOURMET KITCHENS

- Eat-in breakfast areas.
- Furniture-grade cabinets.
- Designer color selection of laminated countertops.
- Stainless steel sink.
- Single lever water-saving washerless faucets.
- GE appliances: oven range, range hood and dishwasher.

LUXURY BATH

- Separate shower and luxurious soaking tub in master baths (most homes).
- Ceramic tile tub and shower surrounds.
- Washerless water-saving single lever faucets.
- Water-saving shower heads.

CUSTOM DECORATOR FEATURES

- Embossed 6 panel interior doors.
- Hardwood entry foyers (most homes).
- Wall to wall carpeting in choice of designer colors.
- No-wax vinyl sheet flooring in kitchens and baths.
- Individually customized lighting fixture package for each home style.

WARRANTY

- 45 day follow-up after settlement
- RWC ten year new home warranty protection program.
- Quality reputation backed by K. Hovnanian's history and experience of building over 40,000 homes over 30 years.

Sales Office:

83 Manley Road
Trenton, N.J. 08638

For Information:

(609) 730-9315
Fax: (609) 730-9321



This is for informational purposes only and subject to change.
Please see your Sales Representative for specifications on your home.



The **DOUGLAS**



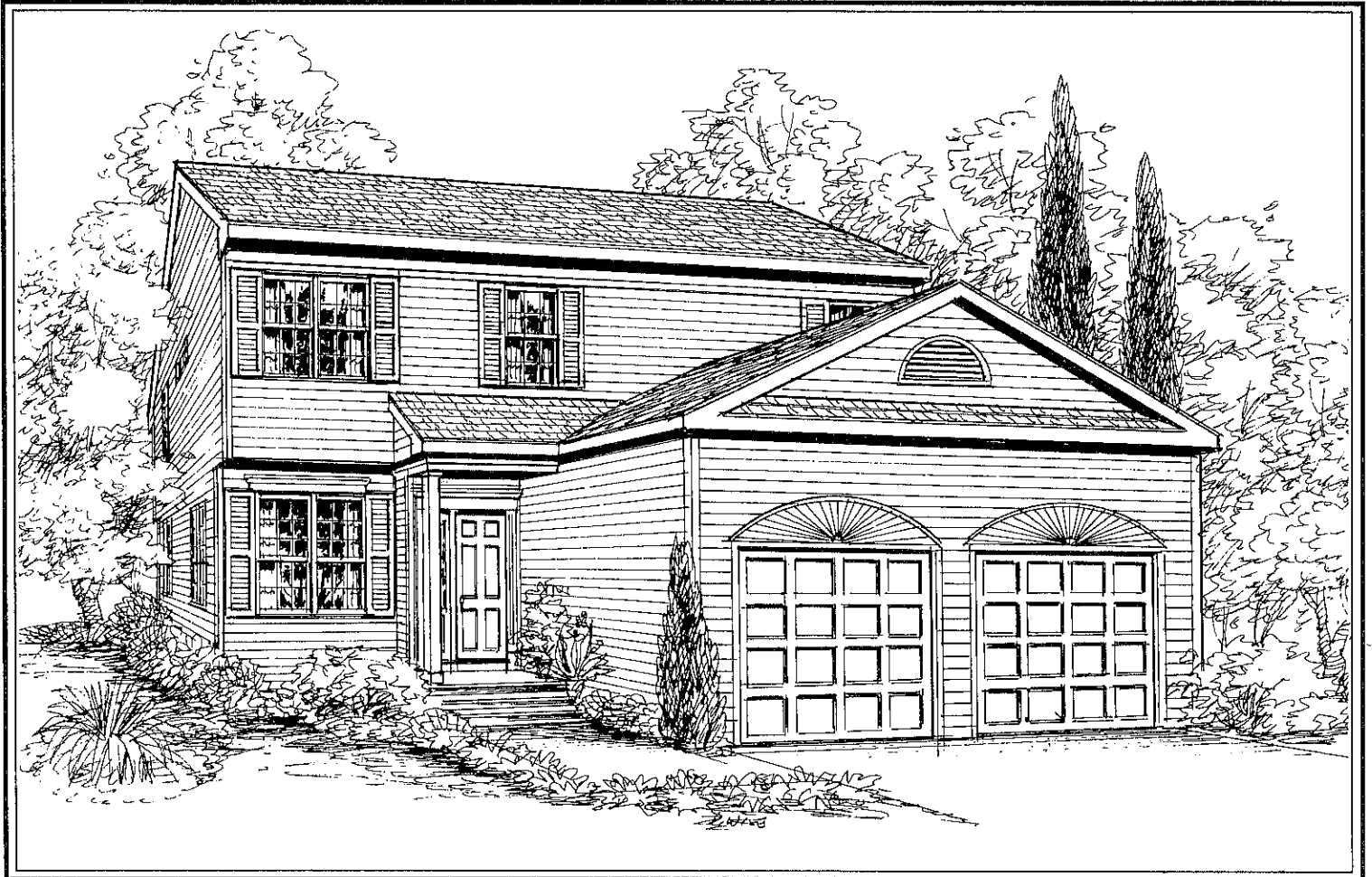
Elevation A

Artist's Rendering.





The **CONCORD**

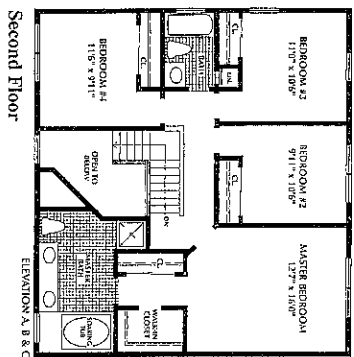
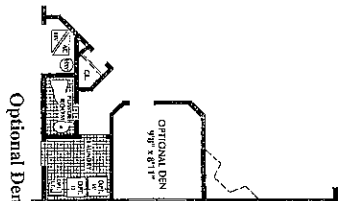
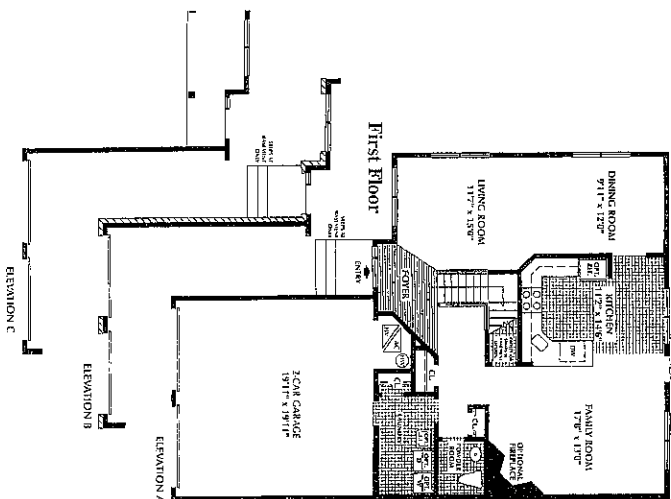


Elevation A

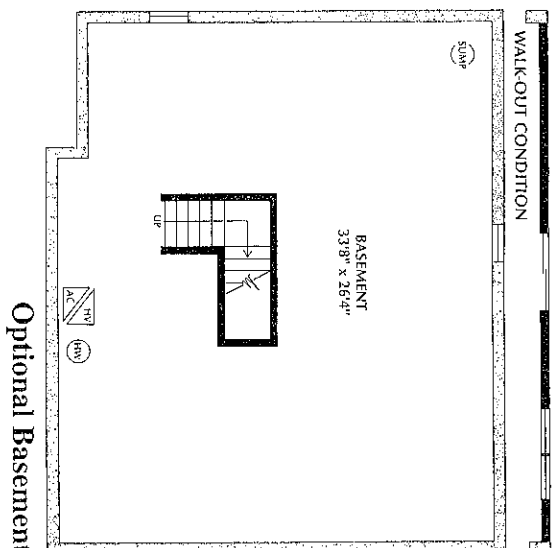
Artist's Rendering.



CONCORD



PLEASE ASK SALES REPRESENTATIVE FOR ENGLISH BASEMENT HOMES.





The
EATON



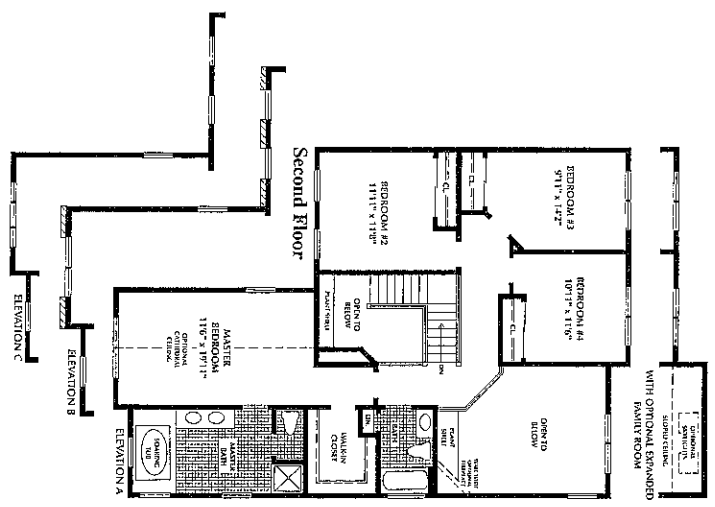
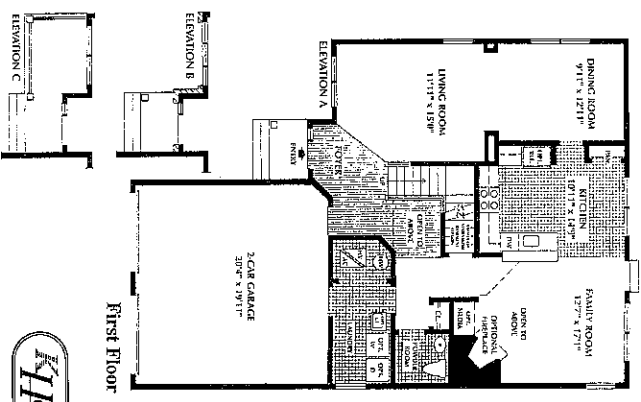
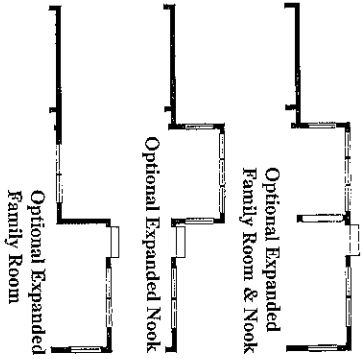
Elevation A

Artist's Rendering.



4 Bedrooms 2 1/2 Baths

**PLEASE
ASK SALES
AGENTIVE
REPRESENTATIVE
FOR BEST
BASEMENT
HOUSES.**



All dimensions are approximate. All drawings are subject to change without notice. All drawings are subject to change without notice. All drawings are subject to change without notice.

